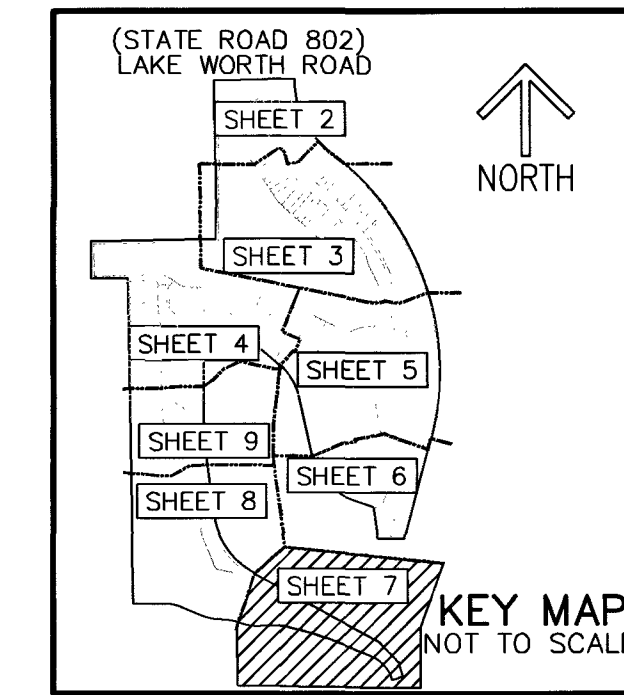


# LAKESHORE AT THE FOUNTAINS

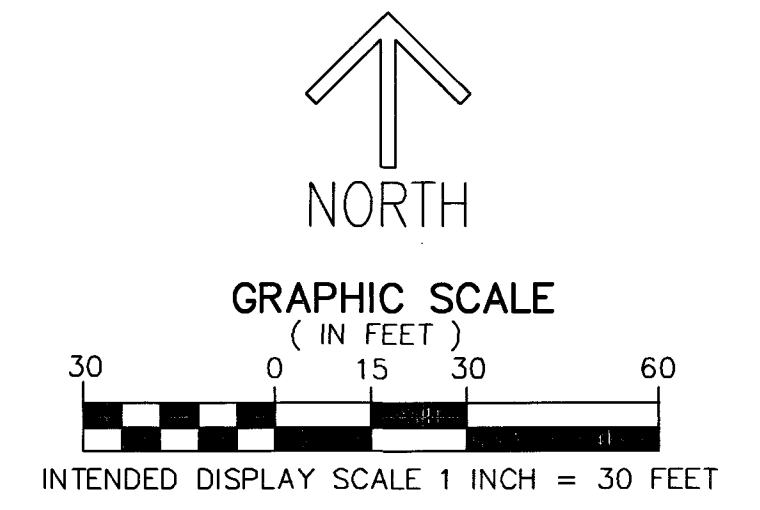
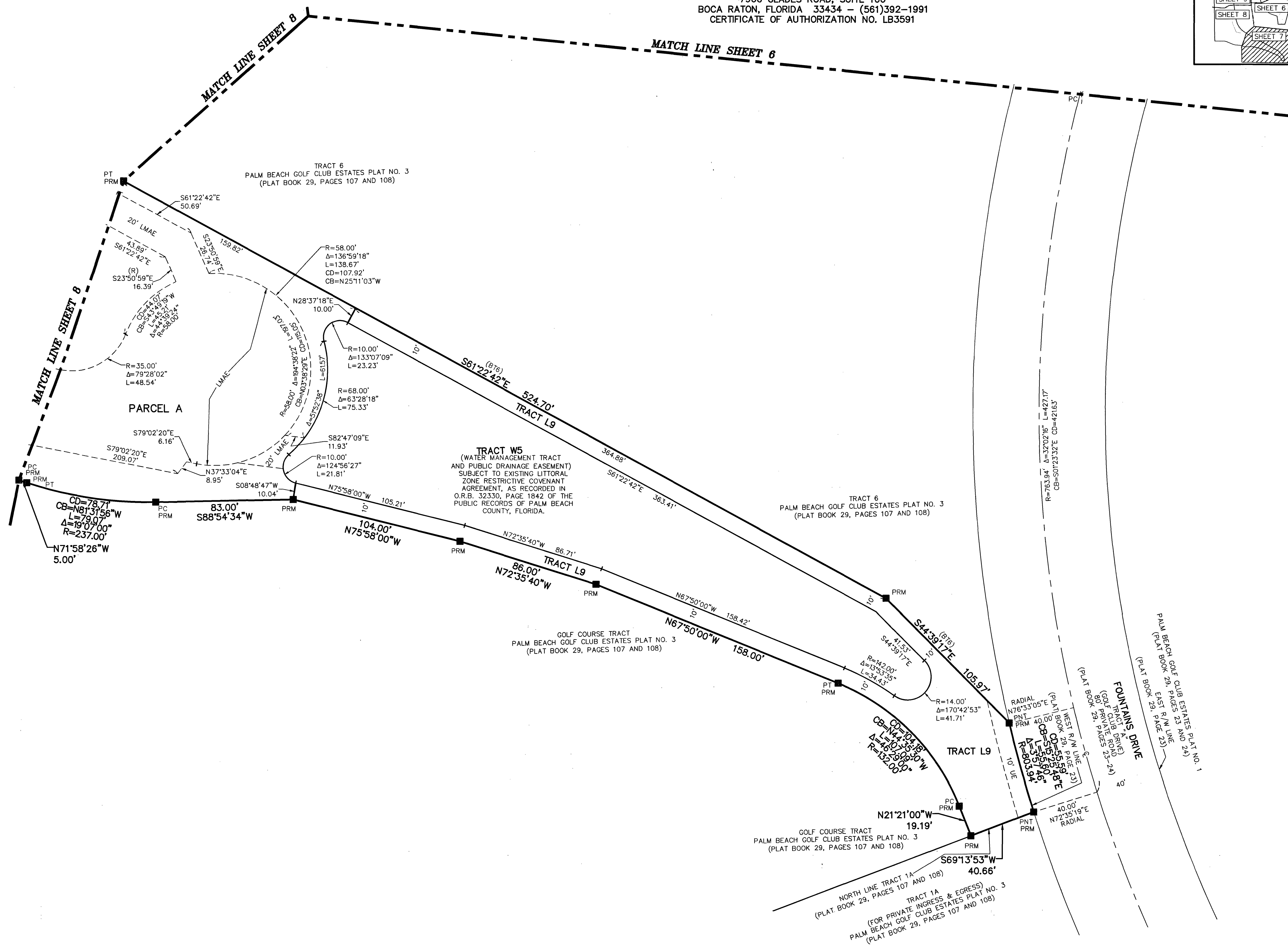
BEING A REPLAT OF A PORTION OF THE GOLF COURSE TRACT, PALM BEACH GOLF CLUB ESTATES PLAT NO. 3, AS RECORDED IN PLAT BOOK 29, PAGES 107 AND 108 OF THE PUBLIC RECORDS OF PALM BEACH COUNTY, FLORIDA, LYING IN SECTIONS 27 AND 28, TOWNSHIP 44 SOUTH, RANGE 42 EAST, PALM BEACH COUNTY, FLORIDA

THIS INSTRUMENT PREPARED BY  
DAVID P. LINDLEY  
OF  
**CAULFIELD & WHEELER, INC.**  
SURVEYORS - ENGINEERS - PLANNERS  
7900 GLADES ROAD, SUITE 100  
BOCA RATON, FLORIDA 33434 - (561)392-1991  
CERTIFICATE OF AUTHORIZATION NO. LB3591



26

SHEET 7 OF 9



**NOTES**  
**COORDINATES, BEARINGS AND DISTANCES**  
COORDINATES SHOWN ARE GRID  
DATUM = NAD 83 (90 ADJUSTMENT)  
ZONE = FLORIDA EAST  
LINEAR UNIT = US SURVEY FEET  
COORDINATE SYSTEM 1983 STATE PLANE  
TRANSVERSE MERCATOR PROJECTION  
ALL DISTANCES ARE GROUND, UNLESS OTHERWISE NOTED  
SCALE FACTOR = 1.0000295  
GROUND DISTANCE X SCALE FACTOR = GRID DISTANCE  
BEARINGS AS SHOWN HEREON ARE GRID DATUM  
NAD 83 (90 ADJUSTMENT), FLORIDA EAST ZONE.

**LEGEND/ABBREVIATIONS**  
C - CENTERLINE  
Δ - DELTA (CENTRAL ANGLE)  
(B16) - BOUNDARY TRACT 6 (PLAT BOOK 29, PAGES 107-108)  
CB - CHORD BEARING  
CD - CHORD DISTANCE  
E - EASTING (WHEN USED WITH COORDINATES)  
FND - FOUND  
L - ARC LENGTH  
LB - LICENSED BUSINESS  
LMAE - LAKE MAINTENANCE ACCESS EASEMENT  
LSE - LIFT STATION EASEMENT  
L.W.D. - LAKE WORTH DRAINAGE DISTRICT  
N - NORTHING (WHEN USED WITH COORDINATES)  
O.R.B. - OFFICIAL RECORD BOOK  
PBCUE - PALM BEACH COUNTY UTILITY EASEMENT  
PC - POINT OF CURVATURE  
PDE - PUBLIC DRAINAGE EASEMENT  
PT - POINT OF TANGENCY  
PNT - POINT OF NON-TANGENCY  
(PRAS) - PRIVATE RESIDENTIAL ACCESS STREET  
(P) - PALM BEACH GOLF CLUB ESTATES PLAT NO. 3  
PLAT BOOK 29, PAGES 107-108  
R - RADIUS  
(R) - RADIAL LINE  
(RFB) - ROAD PLAT BOOK 1, PAGES 128-135  
ROAD PLAT BOOK 5, PAGES 125-138  
R/W - RIGHT-OF-WAY  
● PCP - DENOTES PERMANENT CONTROL POINT  
NAIL AND METAL DISK STAMPED "PCP LB3591"  
■ PRM - DENOTES PERMANENT REFERENCE MONUMENT  
SET 4" x 4" x 24" CONCRETE MONUMENT WITH  
ALUMINUM DISK STAMPED "C&W PRM LB3591"  
△ - DENOTES HORIZONTAL CONTROL POINT